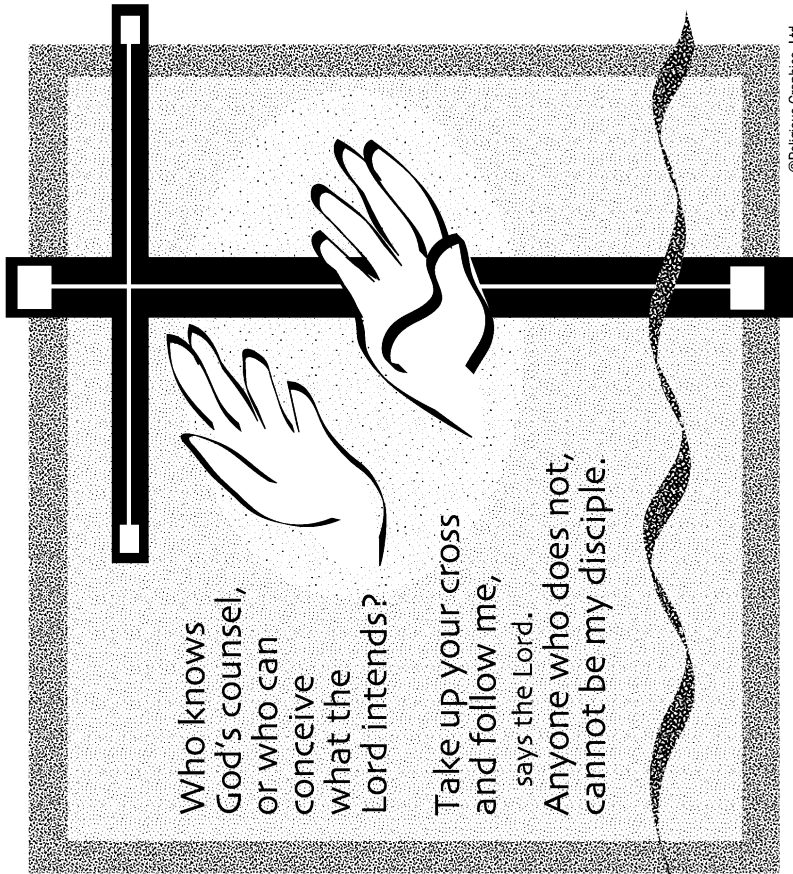


# 23<sup>rd</sup> Sunday in Ordinary Time

September 8, 2019



©Religious Graphics, Ltd.

**Today's Readings:**

1<sup>st</sup> Reading: Wisdom 9:13 – 18B  
 2<sup>nd</sup> Reading: Philemon 9 – 10  
 Gospel: Luke 14:25 – 33

**Next Week's Readings:**

1<sup>st</sup> Reading: Exodus 32:7 – 11, 13 – 14  
 2<sup>nd</sup> Reading: 1 Timothy 1:12 – 17  
 Gospel: Luke 15:1 – 32

Rev. Jojo Puthussery, MF, Pastor, 996-8422

Email: [pastor@stleosonoma.org](mailto:pastor@stleosonoma.org)

601 W. Agua Caliente Rd., Sonoma, CA 95476

P.O. Box 666, Boyes Hot Springs, CA 95416

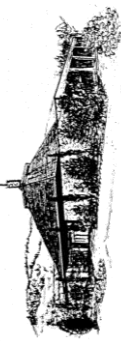
Parish Office, 996-8422 Fax, 996-3984

Website: [www.stleosonoma.org](http://www.stleosonoma.org)

Email: [office@stleosonoma.org](mailto:office@stleosonoma.org)

50 years in Faith and Service

1967 2017



St. Leo Catholic Church

OVER 50 YEARS  
 PROVIDING FUNERAL  
 SERVICE TO SONOMA AND  
 MARIN COUNTIES

## DUGGAN'S MISSION CHAPEL

FUNERAL AND CREMATION SERVICES  
 525 WEST NAPA ST. – SONOMA, CA. 95476

FD903 ♦ CR385  
 (707) 996-3655

[www.duggansmissionchapel.com](http://www.duggansmissionchapel.com)



TURNING HOUSES INTO HOMES SINCE  
 1980

CATHY WADE SHEPARD  
 WWW.CATHYWADE.COM  
 REALTOR®, CIPS, CRB, CRS

c: 707.481.0649  
 Cathy@CathyWade.com

Call today  
 for a  
 complimentary  
 market  
 analysis of  
 your  
 property.

Sotheby's  
 REALTY



(707) 938-1727

EDMOND JOSEPH LANDSCAPE, INC.

Complete Gardening and Landscape Service

CA Lic. No. 555531



### Cafe SARAFORNIA

Madeline & Drake Dierkhising

707-942-0555



1413 Lincoln Avenue, Calistoga

Serving Calistoga and  
 the Napa Valley for 100 years

THOMAS HAEUSER  
 HAEUSER, VALLUZZO & PIASTA  
 Lawyers

466 First Street East  
 (on the Plaza)

996-2131

Certified Specialist in

Estate

Planning,

Trust and

Probate Law



LEMMON  
 707.996.6401

EQUAL JUSTICE

FOR ALL...



[johnlemmon@sbcglobal.net](mailto:johnlemmon@sbcglobal.net)

Donna's  
 Tours & Travel  
 996-0616

Donna Keegan  
 Travel Consultant  
 Hawaii, Ireland & Cruises



Pathways  
 ENERGY

107 Stanford St.,  
 Santa Rosa, CA 95404

Dan Lambert



Solar Energy Sales  
 (707) 484-5808

[Dan@PathwaysEnergy.com](mailto:Dan@PathwaysEnergy.com)

Mary Lyons, PhD, Mft  
 Psychotherapy

526.7720 x321



HABLEN ME POR SUS NECESIDADES DE BIENES RAÍCES  
 CALL ME FOR ALL YOUR REAL ESTATE NEEDS

Roberto Pulido  
 707-732-3306  
 Hablo Español  
 Realtor® #01292573

COLDWELL  
 BANKER  
 BROKERS  
 of the  
 VALLEY



Mark Stornetta  
 Sales Manager

707-815-8749

[mark@markstornetta.com](mailto:mark@markstornetta.com)

ALAIN PINEL  
 REALTORS

Residential~ Vineyard~ Land~ Country Properties

## Staff



**Office Manager** 996-8422  
Michelle Levesque, ext. 17  
[office@stleesonoma.org](mailto:office@stleesonoma.org)

**Parish Bookkeeper / Office Asst.**  
Mayra Alvarez  
[bookkeeper@stleesonoma.org](mailto:bookkeeper@stleesonoma.org)

**Music Coordinator**  
Sherrill Peterson  
For information, call 935-3986

**Coordinator of Religious Education** 996-7503  
Rosa Chavez  
[re@stleesonoma.org](mailto:re@stleesonoma.org)

**Coordinator of Youth Ministry** 291-1916  
Nancy Gibson  
[yall2926@aol.com](mailto:yall2926@aol.com)

## Parish Groups

**Adult Education:** ongoing

**Bereavement:** Contact the office

**Brown Baggers**  
Sharon Delaney, 575-0597

**Centering Prayer (weekly) – Meditation**  
Call Kathleen, 935-9017 or Virginia, 996-9134

**Ladies Ancient Order of Hibernians:**  
Lynn Burkart, 935-3600

**Ladies Guild**  
Ellie Dossee, 938-7053

**Men's Club:** 3<sup>rd</sup> Tuesday of the month  
Steve Rogers, 771-9290  
[www.stleosmensclub.org](http://www.stleosmensclub.org)

**Pastoral Assembly – [xtrrn@vom.com](mailto:xtrrn@vom.com)**  
Mary Pat Manning, 939-1005

**Small Church Communities:**  
Marion Williams, 933-9459

**St. Vincent de Paul Society:**  
4<sup>th</sup> Wednesday of the Month  
Greg Di Paolo, (707) 343-1486

**Ministers to the Sick**  
**YOUR NAME HERE**

## UPCOMING 2<sup>nd</sup> & DIOCESAN (D) COLLECTION Sep. 14 / 15 Diocesan Seminarians (D)

Envelopes for most of the Diocesan (D) 2<sup>nd</sup> collections will be available the weekend before and the day of the collection at the back of church.

## TODAY – Sunday, September 8, 2019

- **COFFEE AND DONUTS** in the Lillian Wing
- **"BREAKING OPEN THE WORD"** Geoff Wood will present a discussion on the Sunday Scripture readings for the coming month today at **8:30 & 10:30 a.m. in the Benziger Rm.**

## COMING EVENTS:

**EARLY MORNING BREAKFAST** is Sunday, September 15<sup>th</sup>. The menu is eggs, sausage, waffles with Watmaugh strawberries and fresh squeezed orange juice. The cost is \$6 per person. Whether you're a regular or you do not usually come, please call Mary Pat at 939-1005 so she will know how much food to prepare. Thanks!

**MENS CLUB MONTHLY DINNER MEETING:** Tuesday, September 17<sup>th</sup> at 6:00 p.m. in the Lillian Wing. All men of the parish are encouraged to attend.

**ST. LEO'S PARISH GOLF TOURNAMENT** hosted by the Men's Club will be held on **Wednesday, September 18<sup>th</sup>** at the Oakmont Golf Club. \$600 per foursome includes, box lunch, green fees, cart and dinner. Four-person scramble with shotgun start at 1:00 p.m. Contact Steve Rogers, 771-9290, for details.

**ST. LEO'S JAMS will be sold on Saturday, September 28<sup>th</sup> and 29<sup>th</sup> before and after Masses.** The funds generated will continue to support our orchard and help defray the cost of the gate put in the back-orchard fence. Jams are limited but we have blackberry, fig, yellow plum, peach, Santa Rosa plum/pluot and some local honey. Many thanks to all the members of the jam committee for their work and to those parishioners who brought jam jars back!

**WHO WANTS TO TAKE THE REINS to the Ministers to the Sick?** After many years of heading up this much appreciated ministry Ann and Gunther Solomon have decided to hand in their pix. If you are a Eucharistic Minister and are interested in bringing the eucharist to the ill or homebound, please contact the parish office at 996-8422.

**2<sup>nd</sup> COLLECTION NEXT WEEKEND** for Diocesan Seminarians.

## SANCTUARY LAMP

*Dedication for September  
In Memory of Ray Levesque*



## ST. LEO'S YOUTH MINISTRY (HSYM)

Nancy Gibson, 291-1916 [yall2926@aol.com](mailto:yall2926@aol.com)

Applications for High and Jr. High School are available in the parish office.

**HIGH SCHOOL YOUTH GROUP: 9<sup>th</sup> - 12<sup>th</sup> graders** meet on Wednesdays, 7:00 - 8:30 p.m. in Hunt Hall. **First class is on Wednesday, October 9<sup>th</sup>.**

**NCYC UPDATE:** St. Leo's High School Youth Ministry will have a group of students attending the National Catholic Youth Conference in Indiana this November. If you are interested in helping to sponsor one of our teens, please contact Nancy Gibson (707) 291-1916. You may make checks payable to *St. Leo's NCYC*.

**JR. HIGH SCHOOL YOUTH GROUP: 7<sup>th</sup> - 8<sup>th</sup> graders** meet twice a month on Thursdays, 6:30 - 7:30 p.m. **First class is on Thursday, October 10<sup>th</sup>.**

**OUR WEBSITE HAS WHAT YOU NEED:** You will find Geoff Wood's notes from his Lectionary talks as well as the weekly Sunday bulletin essays. Visit us at [www.stleesonoma.org](http://www.stleesonoma.org) for general parish information.

**THE DIOCESE OF SANTA ROSA** invites everyone to attend the annual Santa Rosa Religious Education Congress on Saturday, September 28<sup>th</sup>, 2019. This year's theme is *"Encountering Jesus in the Liturgy"*. Workshops are in English and Spanish. Come hear great speakers. For more information check out the diocesan website at [www.santarosacatholic.com](http://www.santarosacatholic.com).

**NEW THIS YEAR: A FREE workshop for parents/guardians – PARENTS NIGHT** with Kendra Tierney, *"Liturgical Living For Busy Parents"* Cardinal Newman High School Gym, Friday, September 27, 7 – 8:00 p.m. For info call 566-3366 or email: [dre@srdiocese.org](mailto:dre@srdiocese.org).

**FREE SQUASH FROM ST. LEO'S GARDEN:** Located near the entrance of church you'll find personal size spaghetti, butternut, and acorn squash, free for the taking. Thank you to Rose Cardinale for her hard work in making our garden fruitful.

## Mass Times

**Saturday Mass:** 5:00 p.m.  
**Sunday Masses:** 7:30 & 9:30 a.m.  
**Weekday Mass:** 8:30 a.m. daily, in the Church  
11:30 a.m. in Spanish  
7:00 p.m. – Wed. – Spanish Mass and Adoration

**Adoration of the Blessed Sacrament:**  
1<sup>st</sup> Friday of the month, 9 -10 a.m.

**Baptism Preparation (Spanish)**  
2<sup>nd</sup> Monday of the month, 7-8:30 p.m.

**Mother of Perpetual Help Novena**  
Every Tuesday after the 8:30 a.m. Mass

✠ **Sacraments** ✠

**Baptisms: Call rectory, 996-8422**

**Confessions: Saturday, 4 – 4:45 PM, in the church**

**Weddings: Call the office, 996-8422**



## MASS INTENTIONS: September 7<sup>th</sup> – September 15<sup>th</sup>

Sat 7	5:00 p.m.	The Garibaldi Family, Special Intention
Sun 8	7:30 a.m.	Kerry Amormino †
	9:30 a.m.	Elaine & Paul Tompkins †
Mon 9	8:30 a.m.	Virgilia Vargas Mapa †
Tues 10	8:30 a.m.	Les Matthews †
Wed 11	8:30 a.m.	Ruth Silva †
Thurs 12	8:30 a.m.	Marty Ingemanson, Improved health
Fri 13	8:30 a.m.	Patricia Ramirez †
Sat 14	5:00 p.m.	Lorraine O'Hern †
Sun 15	7:30 a.m.	Carol Torrasan †
	9:30 a.m.	Bill Murray †

## CALENDAR OF EVENTS:

**Sept 14/15 2<sup>nd</sup> Collection – Diocesan Seminarians**  
**Sept 15 Early Morning Breakfast, 8AM, LSW**  
**Sept 18 R.E. Classes Start, 5:00 -6:30PM**  
**Sept 22 R.E. Classes Start, 9:30 – 11:00AM**  
**Sept 25 SVDP Monthly Meeting, 9:15AM, FINN**  
**Dec 17 Men's Club Holiday Dinner**

## FISCAL LOG: Aug 31 / Sept 1

**Sunday Collection:** \$ 3,703.  
**St. Leo's Development Fund:** \$ 2,928.

**LOOKING FOR AN EASY WAY TO MAKE DONATIONS?** Consider making your donation to St. Leo's with a monthly credit card draw. **It's the no-hassle, environmentally friendly way, and completely secure.** To learn more please contact Michelle or Mayra in the office, 996-8422.

**EUCCHARIST TO THE SICK:** If you know of someone that is ill or is not able to attend Mass who would like to receive the Eucharist, please let us know by calling the parish office at 996-8422.

## Abbreviations of meeting locations

CH - Church	HH - Hunt Hall
BR - Benziger Rm.	MH - Matthews Hall
FINN - Finnegan Ctr.	LSW – Lillian Sanders Wing