

# Fifth Sunday in Ordinary Time

## February 5, 2017

Share your bread  
Shelter the oppressed  
and the homeless  
Clothe the naked

Then shall your  
light break forth  
like the dawn  
and your wound  
shall be healed  
quickly



©Religious Graphics, Ltd.

### Today's Readings:

1<sup>st</sup> Reading: Isaiah 58:7 – 10  
2<sup>nd</sup> Reading: 1 Corinthians 2:1 – 5  
Gospel: Matthew 5:13 – 16

### Next Week's Readings:

1<sup>st</sup> Reading: Sirach 15:15 – 20  
2<sup>nd</sup> Reading: 1 Corinthians 2:6 – 10  
Gospel: Matthew 5:17 – 37

Rev. Jojo Puthussery, MF, Pastor, 996-8422  
601 W. Agua Caliente Rd., Sonoma, CA 95476  
P.O. Box 666, Boyes Hot Springs, CA 95416  
Parish Office, 996-8422 Fax, 996-3984

Website: [www.stleosonoma.org](http://www.stleosonoma.org)  
Email: [office@stleosonoma.org](mailto:office@stleosonoma.org)

Celebrating 50 years  
1967 ~ 2017



St. Leo's Catholic Church

FIFTH GENERATION  
OF FUNERAL SERVICE

**DUGGAN'S MISSION CHAPPEL**

MISSION CREMATION SERVICE  
525 WEST NAPA ST. – SONOMA, CA. 95476

FD – 903

(707) 996-3655  
FAX (707) 996-5479



TURNING HOUSES INTO HOMES SINCE  
1980

**CATHY WADE SHEPARD**  
WWW.CATHYWADE.COM  
REALTOR® CRS, CRE, CRS  
c: 707.481.0649  
Cathy@CathyWade.com

Call today  
for a  
complimentary  
market  
analysis of  
your  
property.

**Sotbeby's**  
REAL ESTATE SERVICES



Marti  
Murray  
996-4970

Open Enrollment now!



Se habla español  
JMVIInsuranceServices.com

**THOMAS HAEUSER**  
Attorney at Law  
466 First Street East  
(on the Plaza)  
996-2131



Certified Specialist in  
Estate  
Planning,  
Trust and  
Probate Law



FOR ALL...



707.996.6401

johnlemmon@sbcglobal.net



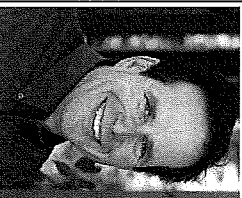
Donna's  
Tours & Travel  
996-0616  
Donna Keegan  
Travel Consultant  
Hawaii, Ireland & Cruises



Mary Lyons, PhD, MEd  
Psychotherapy  
526.7720 x321

mark@markstormetta.com

Mark Stormetta  
Sales Manager  
707-815-8749



Residential ~ Vineyard ~ Land ~ Country Properties



mark@markstormetta.com

*Cafe* SARAFORNIA

Madeline & Drake Dierkhising

707-942-0555



1413 Lincoln Avenue, Calistoga  
Serving Calistoga and  
the Napa Valley for 100 years



(707) 938-1727  
EDMOND JOSEPH LANDSCAPE, INC  
Complete Gardening and Landscape Service  
CA Lic. No. 555531



Bobbie Bostian  
Parishioner  
"Serving the elderly, homebound and children"  
Mobile Dental Hygiene Services  
(707) 695-2495  
www.robtabostianrdhaa.com robtabostian\_rdhap@gmail.com

## Staff

Office Manager 996-8422

Michelle Levesque, ext. 17

NEW EMAIL: [office@stleesonoma.org](mailto:office@stleesonoma.org)

### Music Coordinator

Sherrill Peterson

For information, call 935-3986

Coordinator of Religious Education 996-7503

Rosa Chavez

[rosachavez51@yahoo.com](mailto:rosachavez51@yahoo.com)

Coordinator of Youth Ministry 996-8422

Nancy Gibson, ext. 18

[yall2926@aol.com](mailto:yall2926@aol.com)

## Parish Groups

Adult Education: ongoing

Bereavement: Contact the office

### Brown Baggers

Sharon Delaney, 575-0597

### Centering Prayer (weekly) – Meditation

Call Kathleen, 935-9017 or Virginia, 996-9134

### Ladies Ancient Order of Hibernians:

Leanne McGrady, 762-1723

### Ancient Order of Hibernians (Men)

Roger Burkart, 935-3600

Ladies Guild: 2<sup>nd</sup> Monday of the month

Ellie Dossee, 938-7053

Men's Club: 3<sup>rd</sup> Tuesday of the month

Drake Dierkhising, 938-5901

[www.stleosmensclub.org](http://www.stleosmensclub.org)

Pastoral Assembly – [xrtrn@vom.com](mailto:xrtrn@vom.com)

Mary Pat Manning, 939-1005

RCIA: Patti England, 217-8481

### Small Church Communities:

Marion Williams, 933-9459

### St. Vincent de Paul Society:

1<sup>st</sup> Monday of the Month

Greg Di Paolo, (707) 343-1486

### Ministers to the Sick

Ann Solomon, (707) 343-1240

## Abbreviations of meeting locations

CH - Church  
BR - Benziger Rm.  
FINN - Finnegan Ctr.  
HH - Hunt Hall  
MH - Matthews Hall  
LSW - Lillian Sanders Wing

## UPCOMING 2<sup>nd</sup> & DIOCESAN (D) COLLECTION

Feb 4/5 St Leo Development Fund

March 1 Churches Central & Eastern Europe

Envelopes for most of the Diocesan (D) 2<sup>nd</sup> collections will be available the weekend before and the day of the collection at the back of church.

## TODAY – Sunday, February 5, 2017

- COFFEE & DONUTS TODAY IN THE LSW
- 2<sup>nd</sup> COLLECTION – St Leo Development Fund All donations stay here in the parish and go toward the maintenance of our buildings and grounds.

## COMING EVENTS:

ANOINTING OF THE SICK & HEALING MASS will take place on Friday, February 10<sup>th</sup> at the 8:30 a.m. Mass, Celebration the Feast of Our Lady of Lourdes.

**MEN'S CLUB SUPER BOWL POOL:** The NFL & AFL teams are decided; the numbers picked at random and both football pools are full. A 2 sided copy with the \$20 pool on one side and \$10 pool on the other are available at the back of the church. Grab a copy and check your numbers at the end of each quarter. The original boards are hung on the bulletin board in the LSW. For more information contact Drake at 938-5901. Good Luck!

**IN CELEBRATION OF WOMEN'S HISTORY MONTH:** In March parishioner Teresa Martinelli will be teaching a class at the SRJC on Women Artists of the Renaissance and Baroque. Classes will be Wednesdays, 6 p.m. - 8:00 p.m., March 1<sup>st</sup>, 8<sup>th</sup> & 15<sup>th</sup>, on the Santa Rosa Campus. To register online: <https://communityed.santarosa.edu/> Class ID is 6654. There is a flyer on the bulletin board in the LSW with more information.

**MEMORIAL MASS FOR GERRY DOWNS:** Saturday, February 11<sup>th</sup>, at 11:00 a.m. with reception to follow in the Lillian Sanders Wing. Many of you knew Gerry as the Head of Lay Ministries. She put together the Ministry Schedule for many years, trained new Altar Servers, Eucharistic Ministers, and Lectors as well as starting our Ministry Sign-up events. On most weekends and Holy days, she could be found in the church or sacristy getting folks organized and ready to serve. Along with so many other parishioners that have passed Gerry will be missed dearly. I know that at times she made my job a little easier. Please keep Gerry and her family in your prayers.

## SANCTUARY LAMP

Dedication for *February* offered by Dolores Seda, in loving memory of her son,

**Michael Seda**



## ST. LEO'S YOUTH MINISTRY (HSYM)

Nancy Gibson, 291-1916

[yall2926@aol.com](mailto:yall2926@aol.com)

**HIGH SCHOOL YOUTH GROUP: 9<sup>th</sup> – 12<sup>th</sup> graders** meet on Wednesdays from 7:00 - 8:30 p.m. in Hunt Hall.

**Next HS Wednesday meeting is February 8<sup>th</sup>.**

Attendance at every meeting is mandatory. The High School Youth Ministry occasionally meets on Sundays from 9:30 am to attend Mass, then follows up with a meeting.

**JR. HIGH SCHOOL YOUTH GROUP: 7<sup>th</sup> – 8<sup>th</sup> graders** meet twice a month on Thursdays from 6:30 – 7:30 p.m. in Hunt Hall.

**Next Jr.H meeting is Thursday, February 9<sup>th</sup>.**

**BE PART OF THE DREAM TEAM:** If you are interested in becoming part of the **50<sup>th</sup> Anniversary Planning Committee** contact Ernestine Trujillo at [etrujillosf@comcast.net](mailto:etrujillosf@comcast.net) or leave a message at (707) 282-9123 or just show up at the next meeting **The next planning meeting is Sunday, February 12<sup>th</sup>, at 1:00 p.m. in the Benziger Room.**

**KNIGHTS OF COLUMBUS** to host ~

### Sonoma Mardi Gras

### Paella Dinner

Saturday, February 11<sup>th</sup>

Cocktail Hour – 5:30 p.m. / Paella Dinner – 6:30 p.m. Tickets are \$30 each. For information or tickets – [knightstickets@aol.com](mailto:knightstickets@aol.com) or see flyer on bulletin board in the LSW.

**EARLY MORNING BREAKFAST IS BACK!** The first breakfast of the year will be Sunday, February 19<sup>th</sup> following the 7:30 a.m. Mass, in the LSW. The menu is eggs, sausage, waffles with strawberries, and juice. The amount is \$6 which is a small increase. Profits will be used for our 50<sup>th</sup> Anniversary event. It is a must that you call Mary Pat, 939-1005 or email her at [xrtrn@vom.com](mailto:xrtrn@vom.com) if you plan to attend so that she can plan appropriately. Please contact her by Thursday, February 16<sup>th</sup>.

## Mass Times

**Saturday Mass:**  
5:00 p.m.

**Sunday Masses:**  
7:30 & 9:30 a.m.

**Weekday Mass:**

11:30 a.m. in Spanish

8:30 a.m. daily, in the Church

7:00 p.m. – Wed. – Spanish Mass and Adoration

**Adoration of the Blessed Sacrament:**

1<sup>st</sup> Friday of the month, 9 - 10 a.m.

**Baptism Preparation (Spanish)**

2<sup>nd</sup> Monday of the month, 7-8:30 p.m.

**Mother of Perpetual Help Novena**

Every Tuesday after the 8:30 a.m. Mass

☪ **Sacraments** ☪

**Baptisms:** Call rectory, 996-8422

**Confessions:** Saturday, 4 – 4:45 PM, in the church

**Weddings:** Call the office, 996-8422



## MASS INTENTIONS: February 4<sup>th</sup> – February 12<sup>th</sup>

Sat 4	5:00 p.m.	Lillian Sanders †
Sun 5	7:30 a.m.	Virgilia Vargas Mapa †
	9:30 a.m.	Carl Weber †
Mon 6	8:30 a.m.	Thank you Blessed Mother
Tues 7	8:30 a.m.	Ed Kenny, Improved Health
Wed 8	8:30 a.m.	Dr. Felix C. Mapa †
Thurs 9	8:30 a.m.	Dick Finaly, Speedy recovery
Fri 10	8:30 a.m.	Felix C. Mapa †
Sat 11	5:00 p.m.	Bill & Mary Jane Barber †
Sun 12	7:30 a.m.	Kerry Amormino †
	9:30 a.m.	Dick Finaly, Speedy recovery

## CALENDAR OF EVENTS:

Feb 4/5	2 <sup>nd</sup> Collection – St Leo Development Fund
Feb 10	8:30AM, Healing Mass/Anointing of the Sick
Feb 11	Gerry Downs Memorial Service, 11AM
Feb 12	50 <sup>th</sup> Ann. Meeting, 1PM in the Benziger Rm.
Feb 19	Early Morning Breakfast, 8AM – LSW
Feb 21	Men's Club Monthly Meeting, 6PM, LSW
March 1	Ash Wednesday

## FISCAL LOG: Jan 28 / 29

Sunday Collection: \$ 3,528.

**LECTORS, DON'T FORGET TO PICK-UP YOUR 2017 WORKBOOK FROM THE USHER'S ROOM.**

**FREE RIDES FOR SENIORS:** The Vintage house Senior Transportation Program, LIMO, offers free door-to-door rides for non-medical purposes. Mon. – Fri., 9a.m.-5p.m. Call 996-0311.

## COPIES OF GEOFF WOOD'S SCRIPTURE

**NOTES:** The scripture notes are available in the back of the church or email Michelle; [office@stleesonoma.org](mailto:office@stleesonoma.org) for a copy.